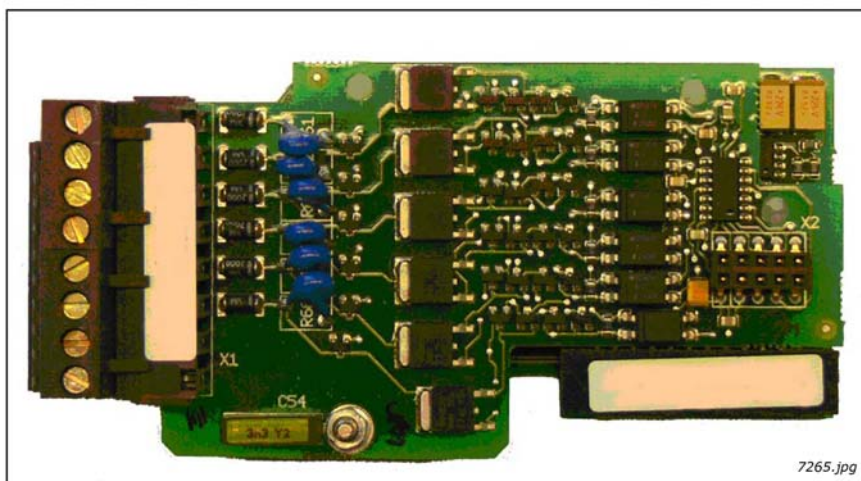


3.1.9 OPTAL



- Description: Dual I/O expander board with six 42...240 VAC digital inputs, 2 analog inputs, two analog outputs, one digital output and 15 and 24 V out.
- Allowed slots: A
- Type ID: 16716
- Terminals: Two terminal blocks; Screw terminals (M2.6, 1.5 mm² wire terminals 1 – 10; M3, 2.5 mm² wire terminals 11-18); No coding
- Jumpers: None
- Board parameters: None

I/O terminals on OPTAL

Table 17. OPTAL I/O terminals

Terminal		Parameter reference Keypad/NCDrive	Technical information
1	+15 V		15 V out – together with terminal 2 max 200 mA
2	+15 V		15 V out
3	AI1	An.IN:A.1	Analog input 0 – 10 V
4	AI2	An.IN:A.2	Analog input ± 10 V
5	GND		Ground for analog signals
6	AO1+	AnOUT:A.1	Analog output 0 (4) – 20 mA
7	AO2+	AnOUT:A.2	Analog output 0 – 10 V
8	DO1		Open collector digital output , 48 V, 50 mA allowed
9	GND		Ground for analog signals
10	+ 24 V		24 V out – max 200 mA
11	ACIN1	DigIN:X.1	Digital input, 42...240 VAC (threshold 35V) Control voltage: "0" <33V, "1" >35V
12	ACIN2	DigIN:X.2	Digital input, 42...240 VAC (threshold 35V) Control voltage: "0" <33V, "1" >35V
13	ACIN3	DigIN:X.3	Digital input, 42...240 VAC (threshold 35V) Control voltage: "0" <33V, "1" >35V
14	ACIN4	DigIN:X.4	Digital input, 42...240 VAC (threshold 35V) Control voltage: "0" <33V, "1" >35V
15	ACIN5	DigIN:X.5	Digital input, 42...240 VAC (threshold 35V) Control voltage: "0" <33V, "1" >35V
16	ACIN6	DigIN:X.6	Digital input, 42...240 VAC (threshold 35V) Control voltage: "0" <33V, "1" >35V
17 18	COMMON		Common input for DI1 - 6