

LPZ

INTERMEDIATE FLANGE
 500 - 24,000 Nm



NEW

PROPERTIES

FEATURES

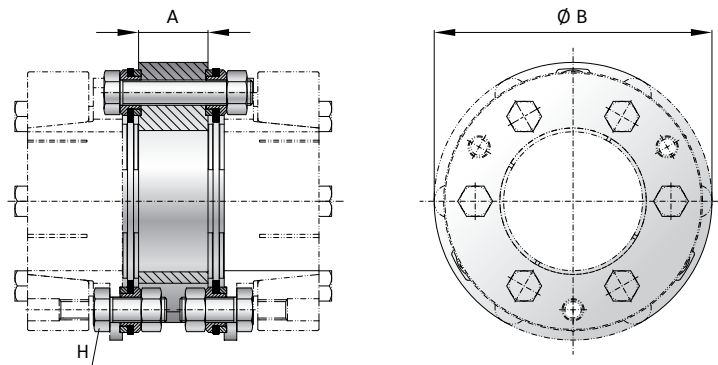
- ▶ very high torsional stiffness
- ▶ double flex design
- ▶ for use with various end hubs

MATERIAL

- ▶ **Disc packs:** highly elastic spring steel
- ▶ **Intermediate flange:** high strength steel

DESIGN

Intermediate flange mounted to the disc packs by means of high strength screws and bushings for alignment and frictional clamping of the assembly.



MODEL LPZ | SIZE 500 - 12000

SIZE			500	800	2500	5000	8000	12000
Rated torque (Nm)	T_{KN}		500	800	2500	5000	8000	12000
Maximum torque (Nm)	T_{Kmax}		1000	1600	5000	10000	16000	24000
Intermediate flange length (mm)	A		24	25	45	55	58	65
Outside diameter (mm)	B		112	135	172	220	270	305
Assembly screw (ISO 4762) Nut (DIN 934)	H		M8	M10	M16	M20	M24	M24
Tightening torque (Nm)			41	83	355	690	1200	1200
Moment of inertia ($10^{-3}kgm^2$)	$J_{ges.}$		1	6	28	82	230	398
Material			Steel	Steel	Steel	Steel	Steel	Steel
Approximate weight (kg)			1.2	2.1	6.2	11.3	20.7	27.2
Torsional stiffness ($10^3Nm/rad$)	C_T		410	1010	1520	3200	5730	12900
Axial ± (mm)			1	1.5	2	2.5	2.5	3
Lateral ± (mm)			0.2	0.3	0.4	0.5	0.6	0.7
Angular ± (degree)			1	1	1	1	1	1
Maximum speed (1/min.)			10000	8000	6000	5000	4500	4000

Additional sizes on request

ORDERING EXAMPLE	LPZ	500	XX
Model	●		Special designation only (e.g. special material).
Size		●	
For custom features place an XX at the end of the part number and describe the special requirements (e.g. LPZ / 500 / XX)			