

BK1

WITH FLANGE MOUNTING

15 - 10,000 Nm



ABOUT

FEATURES

- ▶ For simple flange mounting to special drive components
- ▶ custom flange patterns available

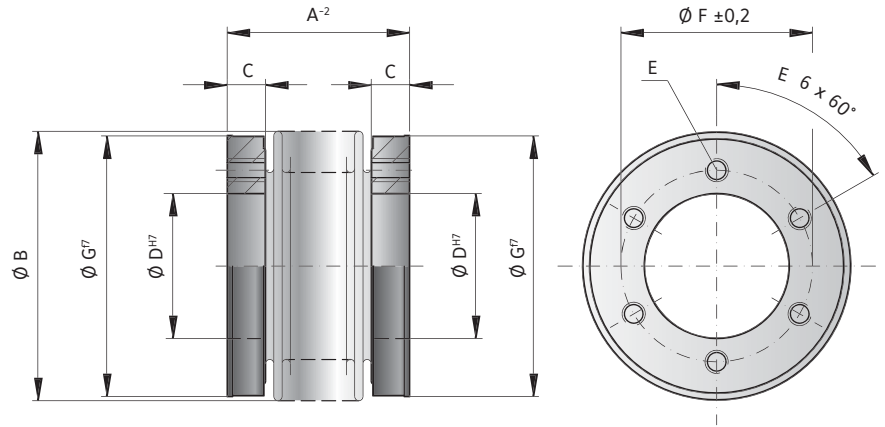
▶ **Hubs:** steel

DESIGN

Two mounting flanges concentrically assembled to the flexible bellows.
Brief overloads of up to 1.5x the rated torque are acceptable.

MATERIAL

- ▶ **Bellows:** high grade stainless steel



MODEL BK1

SIZE		15	30	60	150	200	300	500	800	1500	4000	6000	10000
Rated torque (Nm)	T _{KN}	15	30	60	150	200	300	500	800	1500	4000	6000	10000
Overall length (mm)	A ²	30 37	36 44	43 53	50 62	53 65	56 70	64 77	81	100	145	138	150
Outside diameter of bellows (mm)	B	49	55	66	81	90	110	124	133	157	200	253	303
Fit length/thread depth (mm)	C	7.5	10	11	13	14.5	15	16	18	22	30	30	36
Inside diameter H7 (mm)	D	25	28	38	50	58	65	70	75	85	100	145	190
Fastening threads	E	6 x M5	6 x M5	6 x M6	6 x M6	6 x M6	6 x M8	6 x M8	6 x M10	6 x M16	6 x M20	8 x M20	8 x M24
Bolt circle diameter ± 0.2 (mm)	F	35	37	46	62	70	80	94	90	110	140	190	234
Outside diameter f7 (mm)	G	49	55	66	81	90	110	122	116	140	182	235	295
Moment of inertia (10 ⁻³ kgm ²)	J _{ges}	0.07 0.08	0.14 0.15	0.30 0.32	0.90 0.95	1.30 1.40	1.95 2.10	3.0 3.4	4.3	10.6	46	132	350
Approximate weight (kg)		0.15	0.2	0.3	0.6	0.8	1.35	1.8	1.9	3.3	8.9	13.9	23.7
Torsional stiffness (10 ³ Nm/rad)	C _T	20 15	39 28	76 55	175 110	191 140	450 350	510 500	780	1304	3400	5700	10950
Axial ± (mm)	Max. values	1 2	1 2	1.5 2	2 3	2 3	2.5 3.5	2.5 3.5	3.5	3.5	3.5	3	3
Lateral ± (mm)		0.15 0.2	0.2 0.25	0.2 0.25	0.2 0.25	0.25 0.3	0.25 0.3	0.3 0.35	0.35	0.35	0.4	0.4	0.4
Angular ± (degree)		1 1.5	1 1.5	1 1.5	1 1.5	1 1.5	1 1.5	1 1.5	1 1.5	1.5	1.5	1.5	1.5
Axial spring stiffness (N/mm)	C _s	25 15	50 30	72 48	82 52	90 60	105 71	70 48	100	320	565	1030	985
Lateral spring stiffness (N/mm)	C _r	475 137	900 270	1200 420	1550 435	2040 610	3750 1050	2500 840	2000	3600	6070	19200	21800

ORDERING EXAMPLE	BK1	150	62	XX
Model	●			
Size		●		
Overall length mm			●	
Special designation only (e.g. high speed balancing).				
For custom features place an XX at the end of the part number and describe the special requirements (e.g. BK1 / 150 / 62 / XX; XX=finely balanced for 25,000 rpm)				