



# SIZES FROM 2 - 10,000 Nm

## BACKLASH FREE, TORSIONALLY STIFF

### METAL BELLOWS COUPLINGS

#### GENERAL INFORMATION ABOUT R+W BELLOWS COUPLINGS:



##### SERVICE LIFE

R+W bellows couplings are fatigue resistant and wear free for an infinite service life, as long as the technical limits are not exceeded.

##### FIT CLEARANCE

Overall shaft / hub clearance of 0.01 - 0.05 mm

##### ROTATIONAL SPEED

Standard up to 10,000 rpm.  
Over 10,000 rpm in finely balanced version; up to grade ISO G=2.5 is available.

##### TEMPERATURE RANGE

-30 to +100° C

##### SPECIAL SOLUTIONS

Various materials, tolerances, dimensions and performance ratings available for custom applications on request.

##### ATEX (Optional)

For use in hazardous zones 1/21 and 2/22, the metal bellows has been authorized under directive 94/9/EG and is available with certification.

## TORSIONALLY STIFF BELLOWS COUPLINGS SIZES FROM 2 - 10,000 Nm

MODEL

FEATURES

**BK2**



**with clamping hub  
from 15 - 10,000 Nm**

- ▶ easy to mount
- ▶ available in multiple lengths
- ▶ low moment of inertia

Page 34

**BKH**



**with fully split clamping hub  
from 15 - 4,000 Nm**

- ▶ radial mounting possible
- ▶ easy to install onto pre-aligned shafts
- ▶ low moment of inertia

Page 35

**BKL**



**economy class with clamping hub  
from 2 - 500 Nm**

- ▶ economy design
- ▶ optional self-opening clamp system
- ▶ low moment of inertia

Page 36

**BKS**



**with clamping hub  
from 15 - 500 Nm**

- ▶ all stainless steel construction
- ▶ temperatures up to 300°C
- ▶ easy to mount

Page 37

MODEL

FEATURES

**BKC**



**economy class with clamping hub  
from 15 - 500 Nm**

Page 38

- ▶ low moment of inertia
- ▶ compact design
- ▶ optional self-opening clamp system

**BKM**



**with clamping hub  
from 20 - 1,000 Nm**

Page 39

- ▶ high torque density
- ▶ ultra compact
- ▶ lowest moment of inertia of all clamping hub designs

**BK3**



**with conical clamping hub  
from 15 - 10,000 Nm**

Page 40

- ▶ high clamping pressure
- ▶ modern design for removal system
- ▶ highly reliable

**BK4**



**for tapered shafts  
from 15 - 150 Nm**

Page 41

- ▶ standard 1:10 taper with feather keyway
- ▶ special designs on request

## TORSIONALLY STIFF BELLOWS COUPLINGS SIZES FROM 2 - 10,000 Nm

### MODEL

### FEATURES

**BK5**



**with clamping hub and blind mate connection from 15 - 1,500 Nm**

- ▶ backlash free with two piece design
- ▶ easy installation and removal
- ▶ available as separate components

Page 42

**BK6**



**with conical clamping ring and blind mate connection from 15 - 1,500 Nm**

- ▶ eliminates need for screw access holes
- ▶ self centering hubs for highly concentric mounting
- ▶ easy installation and removal

Page 43

**BK7**



**with expanding shaft from 15 - 300 Nm**

- ▶ for hollow shaft mounting
- ▶ save space and cost
- ▶ solution for mismatched shaft/bore diameters

Page 44

**BK8**



**with ISO flange mounting from 50 - 2,600 Nm**

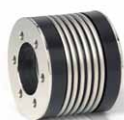
- ▶ for flange output gearboxes
- ▶ allows for continuous hollow through axis with some right angle gearbox designs
- ▶ compact layout

Page 45

MODEL

FEATURES

**BK1**



**with simple flange mounting  
from 15 - 10,000 Nm**

- ▶ for adapting the metal bellows to custom drive components
- ▶ custom flange patterns available

Page 46