



PowerCubeX™ Worm Speed Reducers



MORE MODELS
MORE SELECTION
MORE OPPORTUNITIES

DRIVE CENTRE 
Industrial Automation Systems Integrators

57 Galaxy Blvd., Units 1 & 2, Toronto, ON M9W 5P1
TEL: (416) 231-6767
www.drivecentre.ca

A Regal Brand

REGAL

Features

What is the value of **X**?

- e**X**panded model selection
- e**X**tended ratio offering
- e**X**ceeds or meets previous power ratings
- e**X**traordinary efficiencies
- e**X**act footprint match to most major brands
- e**X**citing new opportunities
- e**X**treme environment protection available
- e**X**cellent performance
- e**X**press assembly available
- 1.33, 1.50, 1.75, 2.06, 2.38, 2.63, 3.00, 3.25, 3.75, 4.25 . . .
10 (**X**) sizes under 5" center distance



Ask your Hub City Representative about the value of . . .

PowerCubeX™!



130 W150 180 210 W240 260 300 320 380 420

PowerCubeX™ Ordering Information

		Example:	325	50/1	A	WR	143TC	1.438
		Unit Series	Model	Ratio	Style	Gear Type	Frame Size	Bore Size
	Series	Center Distance	See Model Availability Table For Models (page 7)	See Ratings Chart for Available Ratios (page 3)	See Dimensional Pages for Style Designations (pages 4-5)	WR : Worm Right (standard)	See Dimensional Tables for Available Frame Sizes (pages 4-5)	See Stock Bores Table (page 5)
13	130	1.33"						
15	W150	1.50"						
18	180	1.75"						
21	210	2.06"						
24	W240	2.38"						
26	260	2.63"						
30	300	3.00"						
32	320	3.25"						
38	380	3.75"						
42	420	4.25"						

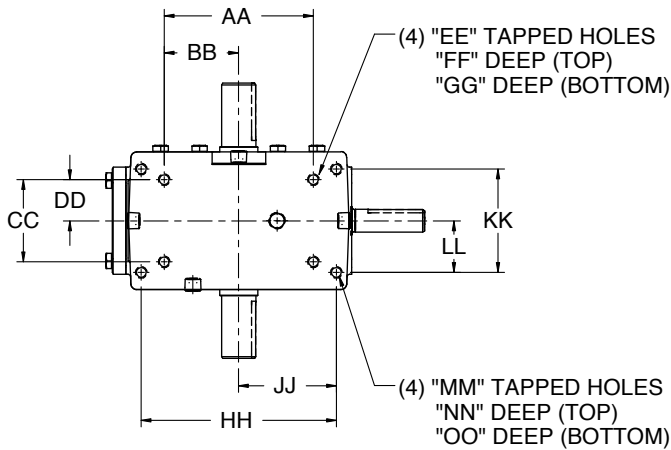
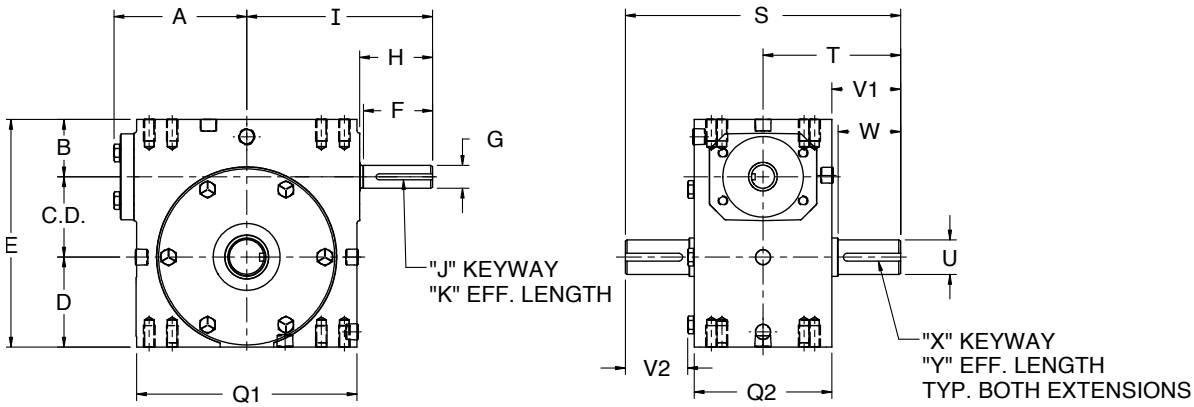
PowerCubeX™ Catalog Ratings

			SERIES 130			SERIES W150			SERIES 180			SERIES 210			SERIES W240		
INPUT RPM	RATIO	OUTPUT RPM	Mech. Input HP	Eff. %	Mech. Output Torque	Mech. Input HP	Eff. %	Mech. Output Torque	Mech. Input HP	Eff. %	Mech. Output Torque	Mech. Input HP	Eff. %	Mech. Output Torque	Mech. Input HP	Eff. %	Mech. Output Torque
2500	5	500	1.65	85.9	178	2.25	85.6	243	3.00	86.8	328	4.40	87.1	483	6.63	87.4	731
	7.5	333	1.30	84.9	208	1.66	83.6	263	2.40	85.6	389	3.55	86.1	578	5.27	86.3	859
	10	250	1.05	82.8	218	1.37	81.5	281	1.96	84.7	418	2.93	85.2	629	4.17	85.5	900
	15	167	0.78	79.4	234	1.03	77.5	301	1.48	81.5	455	2.19	83.0	686	3.12	83.3	983
	20	125	0.62	76.9	240	0.84	74.4	313	1.16	79.8	465	1.73	80.7	705	2.47	81.1	1012
	25	100	0.52	73.2	241	0.71	71.4	319	0.95	78.0	466	1.42	79.2	707	2.05	79.3	1024
	30	83.3	0.45	70.5	241	0.61	67.4	309	0.84	74.0	471	1.23	76.4	713	1.76	76.9	1022
	40	62.5	0.35	66.5	239	0.49	62.7	312	0.65	71.1	465	0.97	72.5	706	1.37	73.2	1014
	50	50.0	0.29	63.4	231	0.41	58.7	306	0.52	68.2	449	0.77	70.1	682	1.12	70.2	989
	60	41.7	0.245	59.4	220	0.35	55.1	293	0.43	65.0	427	0.65	65.8	651	0.90	68.7	940
	80	31.3	0.163	55.0	181	0.250	48.8	244	0.28	60.8	348	0.41	63.3	528	0.60	63.9	779
100	25.0	0.111	50.6	142	0.170	44.2	194	0.191	56.7	272	0.29	58.0	421	0.40	60.0	612	
1750	5	350	1.38	85.0	211	1.94	84.6	296	2.57	85.9	397	3.89	86.3	605	5.69	86.6	888
	7.5	233	1.06	83.9	240	1.50	82.3	330	2.05	84.7	468	3.12	85.1	718	4.53	85.4	1046
	10	175	0.86	81.4	253	1.22	79.9	351	1.63	83.6	491	2.50	84.2	758	3.69	84.5	1123
	15	117	0.65	77.6	271	0.92	75.4	375	1.25	80.0	541	1.86	81.6	819	2.75	81.9	1216
	20	87.5	0.51	74.8	275	0.75	71.8	387	1.00	78.0	541	1.50	79.0	839	2.17	79.5	1245
	25	70.0	0.44	70.8	278	0.63	68.6	392	0.78	76.0	536	1.19	77.3	828	1.79	77.4	1248
	30	58.3	0.38	67.8	279	0.55	64.3	385	0.75	71.5	557	1.06	74.2	847	1.56	74.7	1258
	40	43.8	0.30	63.5	274	0.45	59.3	385	0.55	68.5	540	0.83	69.9	838	1.22	70.6	1244
	50	35.0	0.242	60.3	262	0.38	55.0	376	0.44	65.4	516	0.66	67.3	798	1.00	67.4	1203
	60	29.2	0.207	56.0	250	0.33	51.3	359	0.37	61.9	490	0.57	62.6	773	0.79	65.7	1119
	80	21.9	0.137	51.5	203	0.230	44.9	299	0.25	57.5	395	0.35	60.1	607	0.53	60.6	922
100	17.5	0.094	47.1	159	0.160	40.3	236	0.160	53.3	308	0.25	54.5	487	0.35	56.5	720	

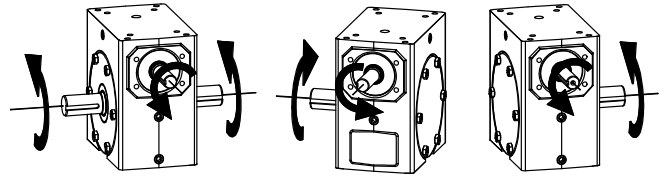
			SERIES 260			SERIES 300			SERIES 320			SERIES 380			SERIES 420		
INPUT RPM	RATIO	OUTPUT RPM	Mech. Input HP	Eff. %	Mech. Output Torque	Mech. Input HP	Eff. %	Mech. Output Torque	Mech. Input HP	Eff. %	Mech. Output Torque	Mech. Input HP	Eff. %	Mech. Output Torque	Mech. Input HP	Eff. %	Mech. Output Torque
2500	5	500	8.61	87.4	948	9.20	87.8	1018	11.17	88.0	1238	22.90	91.7	2665	22.02	88.3	2452
	7.5	333	6.68	86.6	1095	7.49	86.8	1229	9.68	87.0	1591	NA	NA	NA	17.22	87.6	2851
	10	250	5.64	85.8	1220	6.75	86.0	1463	7.92	86.4	1726	14.40	88.2	3223	16.10	87.0	3529
	15	167	4.03	84.4	1288	5.36	84.0	1705	6.51	84.2	2074	10.20	85.0	3294	12.65	85.1	4068
	20	125	3.21	82.1	1329	4.52	82.1	1872	5.31	82.7	2213	8.52	83.2	3607	10.73	83.6	4522
	25	100	2.65	80.5	1345	3.87	80.4	1959	4.51	81.1	2305	NA	NA	NA	9.08	82.2	4704
	30	83.3	2.26	79.0	1350	3.43	78.6	2040	4.11	78.5	2437	5.72	77.6	3352	7.92	79.9	4786
	40	62.5	1.77	74.8	1336	2.68	74.8	2020	3.13	75.7	2392	4.83	74.7	3635	6.31	77.2	4914
	50	50.0	1.43	72.2	1302	2.16	72.0	1962	2.54	73.1	2342	3.86	71.5	3477	5.06	74.9	4771
	60	41.7	1.17	69.7	1236	1.78	69.0	1863	2.08	70.7	2222	3.17	68.2	3273	4.11	72.7	4523
	80	31.3	0.77	65.8	1021	1.14	65.6	1501	1.31	67.3	1782	NA	NA	NA	2.65	69.5	3723
100	25.0	0.51	62.1	801	0.76	61.8	1188	0.88	63.6	1408	NA	NA	NA	1.75	66.2	2923	
1750	5	350	7.35	86.7	1147	7.96	87.1	1249	10.00	87.3	1518	20.00	89.9	3230	19.01	87.8	3005
	7.5	233	5.73	85.8	1327	6.33	86.0	1471	8.38	86.2	1951	NA	NA	NA	15.00	86.9	3495
	10	175	5.00	84.8	1485	5.79	85.0	1774	6.76	85.5	2084	12.60	86.5	3907	13.94	86.2	4326
	15	117	3.49	83.2	1570	4.64	82.7	2074	5.57	83.0	2498	8.87	83.3	3993	10.99	84.0	4987
	20	87.5	2.83	80.6	1640	3.92	80.6	2277	4.59	81.2	2686	7.44	81.6	4372	9.36	82.2	5543
	25	70.0	2.31	78.7	1640	3.37	78.6	2385	3.92	79.4	2805	NA	NA	NA	7.94	80.7	5767
	30	58.3	2.00	77.0	1634	3.00	76.5	2484	3.56	76.4	2943	5.00	75.4	4063	6.96	78.0	5866
	40	43.8	1.58	72.4	1642	2.36	72.3	2458	2.75	73.3	2906	4.22	72.5	4406	5.58	75.0	6024
	50	35.0	1.27	69.5	1583	1.92	69.2	2389	2.25	70.5	2851	3.37	69.4	4214	4.49	72.4	5848
	60	29.2	1.03	66.8	1493	1.59	66.0	2269	1.85	67.8	2706	2.77	66.2	3967	3.55	70.0	5371
	80	21.9	0.67	62.7	1212	1.04	62.3	1870	1.20	64.1	2221	NA	NA	NA	2.35	66.5	4500
100	17.5	0.45	58.7	945	0.70	58.3	1466	0.80	60.2	1740	NA	NA	NA	1.56	62.9	3546	

*Ratings and efficiencies shown are with conventional approved lubricants installed. Optimum Ratings and enhanced efficiencies are available when specified with Polyglycol lubricant. Consult Factory or see Engineering Manual #7 for rating tables.

Model Dimensions



Shaft Input / Shaft Output



Shaft Input - Shaft Output Dimensions

SERIES	C.D.	A	B	D	E	F	G	H	I	J	K	S	T	U	V1	V2	W	X	Y
130	1.334	2.61	1.186	1.562	4.082	1.67	.500/.4985	1.76	3.82	1/8 X 1/16 P&W	1.44	6.50	3.25	.625/.624	1.69	1.53	1.60	3/16 X 3/32	1.38
W150	1.541	3.14	1.928	1.906	5.375	1.76	.625/.6235	1.76	4.35	3/16 X 3/32 P&W	1.50	8.62	4.31	.750/.7485	2.11	1.90	2.08	3/16 X 3/32	1.51
180	1.751	3.23	1.374	1.875	5.000	N/A	.625/.6235	1.76	4.44	3/16 X 3/32 P&W	1.50	7.00	3.50	.750/.749	1.78	1.57	1.54	3/16 X 3/32	1.41
210	2.064	3.61	1.500	2.437	6.000	N/A	.625/.6235	1.76	4.82	3/16 X 3/32 P&W	1.50	8.50	4.25	.875/.874	2.19	1.98	1.95	3/16 X 3/32	1.83
W240	2.376	3.77	2.061	2.500	6.937	2.38	.750/.7485	2.38	5.51	3/16 X 3/32 P&W	1.75	10.28	5.14	1.125/1.1235	2.66	2.44	2.62	1/4 x 1/8	1.76
260	2.626	4.33	1.874	2.938	7.438	2.36	.750/.7485	2.38	6.07	3/16 X 3/32 P&W	1.75	9.00	4.50	1.125/1.124	2.25	2.04	N/A	1/4 x 1/8	1.85
300	3.001	4.84	2.624	3.250	8.875	2.38	.875/.8735	2.38	6.57	3/16 X 3/32 P&W	1.75	13.50	6.75	1.250/1.2485	3.60	3.36	3.57	1/4 X 1/8	2.26
320	3.251	5.28	2.124	3.250	8.625	N/A	.875/.8735	2.38	6.75	3/16 X 3/32 P&W	1.75	10.88	5.44	1.375/1.374	2.84	2.62	2.75	5/16 X 5/32	2.31
380	3.751	4.90	2.374	3.937	10.062	2.20	1.000/.999	2.48	7.38	1/4 X 1/8 P&W	1.91	13.38	6.69	1.500/1.499	3.88	N/A	N/A	3/8 X 3/16	3.16
420	4.251	6.10	2.686	4.438	11.375	3.47	1.250/1.2485	3.47	9.57	1/4 X 1/8 P&W	2.87	16.24	8.12	1.875/1.8735	4.50	4.21	4.47	1/2 X 1/4	3.06

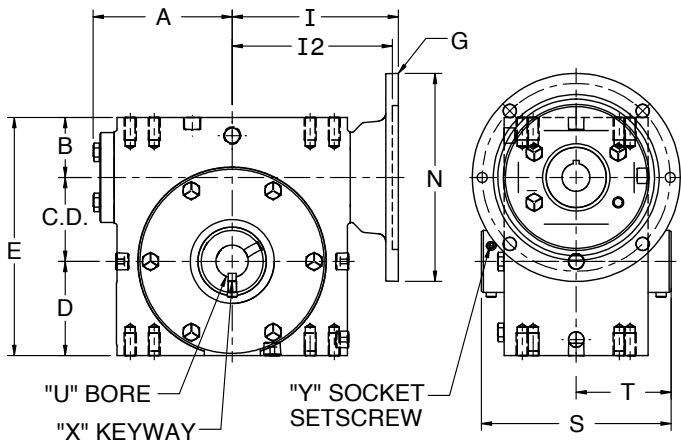
Mounting Dimensions - Typical All Models

SERIES	AA	BB	CC	DD	EE	FF	GG	HH	JJ	KK	LL	MM	NN	OO	Q1	Q2
130	2.250	1.125	1.625	0.813	1/4 UNC	0.50	0.50	3.250	1.625	2.000	1.000	5/16 UNC	0.50	0.50	4.12	3.12
W150	4.188	2.094	2.750	1.375	5/16 UNC	0.63	0.63	N/A	N/A	N/A	N/A	N/A	N/A	N/A	4.88	3.44
180	3.125	1.563	1.625	0.813	1/4 UNC	0.50	0.50	4.188	2.094	2.750	1.375	5/16 UNC	0.63	0.63	5.16	3.44
210	4.000	2.000	2.000	1.000	3/8 UNC	0.50	0.70	5.000	2.500	2.875	1.438	3/8 UNC	0.70	0.70	5.88	4.12
W240	5.000	2.500	2.875	1.438	3/8 UNC	0.69	0.69	N/A	N/A	N/A	N/A	N/A	N/A	N/A	6.12	4.06
260	4.875	2.438	2.688	1.344	3/8 UNC	0.70	0.70	6.375	3.188	3.375	1.688	3/8 UNC	0.70	0.70	7.20	4.50
300	7.000	3.500	4.000	2.000	7/16 UNC	0.88	0.88	N/A	N/A	N/A	N/A	N/A	N/A	N/A	8.12	5.25
320	6.250	3.125	2.750	1.375	1/2 UNC	0.75	0.75	7.500	3.750	4.000	2.000	7/16 UNC	0.88	0.88	8.62	5.20
380	6.875	3.438	3.000	1.500	1/2 UNC	0.94	1.00	8.500	4.250	4.750	2.375	1/2 UNC	1.00	1.00	9.60	5.62
420	8.500	4.250	5.000	2.500	5/8 UNC	1.00	1.00	N/A	N/A	N/A	N/A	N/A	N/A	N/A	10.25	6.13

Dimensions shown are for reference only. Please refer to Model Availability table (Page 7) for specific model number configuration and identification.

Specifications are subject to change without notice

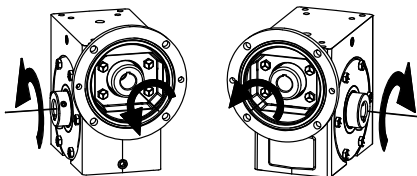
Model Dimensions



NEMA C-Flange Input • Hollow Bore Output Dimensions

SERIES	C.D.	A	B	D	E	G	I	I2	N	S	T		
130	1.334	2.61	1.186	1.562	4.082	48CZ	3.46	N/A	3.87	4.50	2.25		
						56C			6.50				
W150	1.541	3.14	1.928	1.906	5.375	48CZ	3.99	N/A	3.87	5.42	2.71		
						56C			6.50				
						143TC			6.50				
180	1.751	3.23	1.374	1.875	5.000	48CZ	4.09	N/A	3.87	4.81	2.41		
						56C			6.50				
						143TC			6.50				
210	2.064	3.61	1.500	2.437	6.000	48CZ	4.46	N/A	3.87	5.56	2.78		
						56C			6.50				
						143TC			6.50				
W240	2.376	3.77	2.061	2.500	6.937	56C	4.63	N/A	6.50	6.00	3.00		
						143TC			6.50				
						182TC			N/A			5.06	9.00
						182TC			N/A			5.81	9.00
260	2.626	4.33	1.874	2.938	7.438	56C	5.19	N/A	6.50	5.93	2.97		
						143TC			6.50				
						182TC			N/A			5.81	9.00
						182TC			N/A			5.81	9.00
300	3.001	4.84	2.624	3.250	8.875	56C	5.95	N/A	6.50	7.50	3.75		
						143TC			6.50				
						182TC			N/A			6.15	9.00
						213TC			N/A			6.56	9.00
						213TC			N/A			6.56	9.00
320	3.251	5.28	2.124	3.250	8.625	56C	6.14	N/A	6.50	7.56	3.78		
						143TC			6.50				
						182TC			N/A			6.53	9.00
						213TC			N/A			7.09	9.00
						213TC			N/A			7.09	9.00
380	3.751	4.90	2.374	3.937	10.062	56C	6.50	N/A	6.50	7.56	3.78		
						143TC			6.50				
						182TC			N/A			6.88	9.00
						213TC			N/A			6.88	9.00
420	4.251	6.10	2.686	4.438	11.375	56C	6.45	N/A	6.50	8.50	4.25		
						143TC			6.50				
						182TC			N/A			7.21	9.00
						213TC			N/A			7.21	9.00
						254TC			N/A			7.77	9.00

NEMA - C-flange Input - Hollow Bore Output



STYLE "A"

STYLE "B"

NOTE: STYLE "A" SUPPLIED AS STANDARD UNLESS SPECIFIED OTHERWISE.

Stock Hollow Bore Dimensions

SERIES	U	X	KEY FURNISHED	Y
130	5/8 (MAX.)	3/16 X 3/32	3/16 SQ	10-24 NC X 1/4 LG
W150	5/8 (MAX.)	3/16 X 3/32	3/16 SQ	10-24 NC X 1/4 LG
180	15/16	1/4 X 1/8	1/4 SQ	10-24 NC X 3/8 LG
	1 (MAX.)	1/4 X 1/8	1/4 SQ	10-24 NC X 3/8 LG
210	15/16	1/4 X 1/8	1/4 SQ	5/16 NC X 1/2 LG
	1	1/4 X 1/8	1/4 SQ	5/16 NC X 1/2 LG
	1-3/16	1/4 X 1/8	1/4 SQ	5/16 NC X 3/8 LG
	1-1/4	1/4 X 1/8	1/4 SQ	1/4 NC X 3/8 LG
	1-7/16	3/8 X 1/8	3/8 X 5/16	1/4 NC X 3/8 LG
W240	1-1/2 (MAX.)	3/8 X 1/8	3/8 X 5/16	1/4 NC X 3/8 LG
	1	1/4 X 1/8	1/4 SQ	1/4 NC X 1/4 LG
	1-1/8	1/4 X 1/8	1/4 SQ	1/4 NC X 1/4 LG
	1-3/16	1/4 X 1/8	1/4 SQ	1/4 NC X 1/4 LG
	1-1/4	1/4 X 1/8	1/4 SQ	1/4 NC X 1/4 LG
	1-7/16	3/8 X 1/8	3/8 X 5/16	1/4 NC X 1/4 LG
260	1-1/2 (MAX.)	3/8 X 1/8	3/8 X 5/16	1/4 NC X 1/4 LG
	1	1/4 X 1/8	1/4 SQ	5/16 NC X 1/2 LG
	1-3/16	1/4 X 1/8	1/4 SQ	5/16 NC X 3/8 LG
	1-1/4	1/4 X 1/8	1/4 SQ	5/16 NC X 3/8 LG
	1-7/16	3/8 X 1/8	3/8 X 5/16	1/4 NC X 3/8 LG
300	1-1/2 (MAX.)	3/8 X 1/8	3/8 X 5/16	1/4 NC X 3/8 LG
	1-3/16	1/4 X 1/8	1/4 SQ	5/16 NC X 1/4 LG
	1-1/4	1/4 X 1/8	1/4 SQ	5/16 NC X 1/4 LG
	1-7/16	3/8 X 3/16	3/8 SQ	5/16 NC X 1/4 LG
	1-1/2	3/8 X 3/16	3/8 SQ	5/16 NC X 1/4 LG
	1-5/8	3/8 X 3/16	3/8 SQ	5/16 NC X 1/4 LG
	1-11/16	3/8 X 3/16	3/8 SQ	5/16 NC X 1/4 LG
	1-3/4	3/8 X 3/16	3/8 SQ	5/16 NC X 1/4 LG
	1-7/8	1/2 X 1/4	1/2 SQ	5/16 NC X 1/4 LG
	1-15/16	1/2 X 1/4	1/2 SQ	5/16 NC X 1/4 LG
320	2	1/2 X 1/4	1/2 SQ	5/16 NC X 1/4 LG
	2-3/16 (MAX.)	1/2 X 1/4	1/2 SQ	5/16 NC X 1/4 LG
	1-7/16	3/8 X 3/16	3/8 SQ	3/8 NC X 3/4 LG
	1-15/16	1/2 X 1/4	1/2 SQ	3/8 NC X 3/4 LG
	2	1/2 X 1/4	1/2 SQ	3/8 NC X 5/8 LG
380	2-3/16 (MAX.)	1/2 X 1/8	1/2 X 3/8	3/8 NC X 1/2 LG
	1-7/16	3/8 X 3/16	3/8 SQ	3/8 NC X 5/8 LG
	1-15/16	1/2 X 1/4	1/2 X 3/8	3/8 NC X 3/8 LG
	2	1/2 X 1/4	1/2 X 3/8	3/8 NC X 3/8 LG
	2-3/16 (MAX.)	1/2 X 1/8	1/2 X 3/8	3/8 NC X 3/8 LG
420	1-7/16	3/8 X 3/16	3/8 SQ	5/16 NC X 1/4 LG
	1-1/2	3/8 X 3/16	3/8 SQ	5/16 NC X 1/4 LG
	1-5/8	3/8 X 3/16	3/8 SQ	5/16 NC X 1/4 LG
	1-11/16	3/8 X 3/16	3/8 SQ	5/16 NC X 1/4 LG
	1-3/4	3/8 X 3/16	3/8 SQ	5/16 NC X 1/4 LG
	1-7/8	1/2 X 1/4	1/2 SQ	5/16 NC X 1/4 LG
	1-15/16	1/2 X 1/4	1/2 SQ	5/16 NC X 1/4 LG
	2	1/2 X 1/4	1/2 SQ	5/16 NC X 1/4 LG
2-3/16 (MAX.)	1/2 X 1/4	1/2 SQ	5/16 NC X 1/4 LG	

Bore tolerance nominal -0/ +.002

Double Reduction Models Also Available



Consult factory or Hub City Engineering Manual for specifications.

Dimensions shown are for reference only. Please refer to Model Availability table (Page 7) for specific model number configuration and identification. Specifications are subject to change without notice.

PowerCubeX™ Accessories



Universal Base Kits

Series	Kit Number
130	0229-01761
W150	0229-03187
180	0229-01592
210	0229-01750
W240	0229-03062
260	0229-01785
300	0229-03188
320	0229-01925
380	0229-02409
420	0229-03189



J-Bracket Kits

Series	Kit Number
130	0229-03190
W150	0229-03191
180	0229-03192
210	0229-03193
W240	0229-03194
260	0229-03195
300	0229-03196
320	0229-03197
380	0229-03198
420	*

* Factory Modifications Required.



Flange Bracket Kits

Series	Part Number
130	0229-03200
W150	N/A
180	0229-02950
210	0229-02951
W240	0229-02952
260	0229-02953
260 (180)	0229-02954
300	N/A
320	0229-02955
380	0229-02956
420	N/A



F-Flange Kits

Series	Kit Number
130	N/A
W150	0229-03201
180	N/A
210	N/A
W240	0229-03202
260	N/A
300	0229-03203
320	N/A
380	N/A
420	0229-03204



Side Mounting Kits

Series	Kit Number
130	0229-02989
W150	0229-03205
180	0229-02990
210	0229-02991
W240	0229-03206
260	0229-02993
300	0229-03207
320	0229-02994
380	0229-02995
420	*

* Factory Modifications Required.



Torque Arm Kits

Series	Kit Number
130	0229-03209
W150	0229-03210
180	0229-02996
210	0229-02997
W240	0229-02998
260	0229-02999
300	0229-03211
320	0229-03000
380	0229-03001
420	0229-03212



Riser Blocks

Series	Part Number
130	N/A
W150	0223-08321
180	0223-07721
210	0223-07722
W240	0223-07723
260	0223-07724
300	0223-08322
320	0223-07725
380	N/A
420	0223-08323



Hollow Output Cover Kits**

Series	Kit Number
130	coming soon
W150	coming soon
180	coming soon
210	coming soon
W240	0229-03217***
260	coming soon
300	0229-03219
320	coming soon
380	coming soon
420	coming soon

**Consult Factory for Availability.
***Currently Mounts to Side Opposite Cover Only.

C-Flange Adapter Kits



Series	Frame Size					
	48CZ	56C	143TC	182TC	213TC	254TC
130	0229-03223	0229-03227	N/A	N/A	N/A	N/A
W150	0229-03224	0229-03228	0229-03236	N/A	N/A	N/A
180	0229-03225	0229-03229	0229-03237	N/A	N/A	N/A
210	0229-03226	0229-03230	0229-03238	N/A	N/A	N/A
W240	N/A	0229-03231	0229-03239	0229-03244	N/A	N/A
260	N/A	0229-03232	0229-03240	0229-03245	N/A	N/A
300	N/A	0229-03233	0229-03241	0229-03246	N/A	N/A
320	N/A	0229-03234	0229-03242	0229-03247	0229-03249	N/A
380	N/A	0229-02985	0229-02986	0229-02987	N/A	N/A
420	N/A	0229-03235	0229-03243	0229-03248	0229-03250	0229-03251

For dimensions and availability, consult factory or refer to Hub City Engineering Manual #7, Section B

Specifications are subject to change without notice

Model Dimensions

Model Availability

SERIES										
Input Desc Output Desc	Shaft Input Shaft Output	Shaft Input Hollow Bore	Shaft Input Hollow Bore w/ Side Mt	C-Face Input Shaft Output	C-Face Input Hollow Bore	C-Face Input Hollow Bore w/ Side Mt	Shaft Input Drop Brg Flange	C-Face Input Drop Brg Flange	Shaft Input Vertical Mt Flange	C-Face Input Vertical Mt Flange
130	131	132	133^	134	135	136	-	-	-	-
150	151	152	153~	154	155	156	-	-	-	-
180	181	182	183^	184	185	186	-	-	182 w/Kit*	185 w/Kit*
210	211	212	213^	214	215	216	-	-	212 w/Kit*	215 w/Kit*
240	241	242	243^	244	245	246	-	-	242 w/Kit*	245 w/Kit*
260	261	262	263^	264	265	266	-	-	262 w/Kit*	265 w/Kit*
300	301	302	303~	304	305	306	307	308	-	-
320	321	322	323^	324	325	326	327	328	322 w/Kit*	325 w/Kit*
380	381	382	383^	384	385	386	387	388	382 w/Kit*	385 w/Kit*
420	421	422	423~	424	425	426	427	428	-	-

*Flange and Shaft kit available, See Engineering Manual #7 or Consult Factory
 ^Assembly includes Flange Bracket Kit (See Page 6)
 ~Assembly includes F-Flange Kit (See Page 6)

Competitor Interchange Guide

CENTER DISTANCE (Inches)	1.33	1.50	1.75	2.06	2.38	2.62	3.00	3.25	3.75	4.25
Solid Output Shaft-NEMA C Flange Reducer (Quill Input)										
PowerCubeX Model	134	154	184	214	244	264	304	324	384	424
BALDOR	F913	F915	F918	F921	F924	F926	F930	F932	F938	—
BOSTON	F713	F715	F718	F721	F724	F726	F730	F732	F738	—
Dodge-Tigear-2	13Q	15Q	17Q	20Q	23Q	26Q	30Q	—	35Q	—
Falk-Omnibox	1133WBM	1150WBM	1175WBM	1206WBM	1238WBM	1262WBM	1300WBM	1325WBM	—	1425WBM
Morse-Raider	133Q	154Q	175Q	206Q	237Q	262Q	300Q	325Q	375Q	450Q
Solid Output Shaft-NEMA C Flange Reducer (Coupled Input)										
PowerCubeX Model w/C-Flange Kit*	131	151	181	211	241	261	301	321	381	421
BALDOR	LF913	LF915	LF918	LF921	LF924	LF926	LF930	LF932	LF938	—
BOSTON	RF713	RF715	RF718	RF721	RF724	RF726	RF730	RF732	RF738	—
Dodge-Tigear-2	13A	15A	17A	20A	23A	26A	30A	—	35A	—
Falk-Omnibox	1133WBF	1150WBF	1175WBF	1206WBF	1238WBF	1262WBF	1300WBF	1325WBF	—	1425WBF
Morse-Raider	133C	154C	175C	206C	237C	262C	300C	325C	375C	450C
Solid Output Shaft-Non-Flanged Reducer (Basic Unit)										
PowerCubeX Model	131	151	181	211	241	261	301	321	381	421
BALDOR	S913	S915	S918	S921	S924	S926	S930	S932	S938	—
BOSTON	713	715	718	721	724	726	730	732	738	—
Dodge-Tigear-2	13S	15S	17S	20S	23S	26S	30S	—	35S	—
Falk-Omnibox	1133WB	1150WB	1175WB	1206WB	1238WB	1262WB	1300WB	1325WB	—	1425WB
Morse-Raider	133U	154U	175U	206U	237U	262U	300U	325U	375U	450U
Hollow Output Shaft-NEMA C Flange Reducer (Quill Input)										
PowerCubeX Model	135	155	185	215	245	265	305	325	385	425
BALDOR	HF913	HF915	HF918	HF921	HF924	HF926	HF930	HF932	HF938	—
BOSTON	HF713	HF715	HF718	HF721	HF724	HF726	HF730	HF732	HF738	—
Dodge-Tigear-2	13QH	15QH	17QH	20QH	23QH	26QH	30QH	—	35QH	—
Falk-Omnibox	1133WBQM	1150WBQM	1175WBQM	1206WBQM	—	1262WBQM	1300WBQM	1325WBQM	—	1425WBQM
Morse-Raider	133QH	154QH	175QH	206QH	237QH	262QH	300QH	325QH	375QH	450QH
Hollow Output Shaft-NEMA C Flange Reducer (Coupled Input)										
PowerCubeX Model w/C-Flange Kit*	132	152	182	212	242	262	302	322	382	422
BALDOR	HLF913	HLF915	HLF918	HLF921	HLF924	HLF926	HLF930	HLF932	HLF938	—
BOSTON	HRF713	HRF715	HRF718	HRF721	HRF724	HRF726	HRF730	HRF732	HRF738	—
Dodge-Tigear-2	13AH	15AH	17AH	20AH	23AH	26AH	30AH	—	35AH	—
Falk-Omnibox	1133WBQF	1150WBQF	1175WBQF	1206WBQF	—	1262WBQF	1300WBQF	1325WBQF	—	1425WBQF
Morse-Raider	133CH	154CH	175CH	206CH	237CH	262CH	300CH	325CH	375CH	450CH
Hollow Output Shaft - Non-Flanged Reducer (Basic Unit)										
PowerCubeX Model	132	152	182	212	242	262	302	322	382	422
BALDOR	HS913	HS915	HS918	HS921	HS924	HS926	HS930	HS932	HS938	—
Boston	H713	H715	H718	H721	H724	H726	H730	H732	H738	—
Dodge-Tigear-2	13SH	15SH	17SH	20SH	23SH	26SH	30SH	—	35SH	—
Falk-Omnibox	1133WBQ	1150WBQ	1175WBQ	1206WBQ	1238WBQ	1262WBQ	1300WBQ	1325WBQ	—	1425WBQ
Morse-Raider	133UH	154UH	175UH	206UH	237UH	262UH	300UH	325UH	375UH	450UH

*C-Flange Kits must be ordered separately. See page 6.

Information provided for reference only. Confirm critical mounting criteria prior to ordering.

Specifications are subject to change without notice

Located to Serve You!

24-Hour assembly and shipment, and on-the-shelf availability of our most sought after products

Hub City Headquarters

2914 Industrial Avenue
Aberdeen, SD 57402
(605) 225-0360
(800) 482-2489

Hub City Florida

4725 Lakeland Commerce Pkwy., Suite 6
Lakeland, FL 33805
(863) 665-9374

Hub City West

11034 Forest Place
Santa Fe Springs, CA 90670
(714) 776-1992
(800) 551-6661

Hub City Southwest

3251 Royalty Row
Irving, TX 75062
(972) 721-0080
(800) 494-1918

Hub City Midwest

9899 E. Cty Rd 200 South
Avon, IN 46123
(317) 837-1150
(800) 253-4281

Hub City Northeast

6520 Stonegate Drive
Allentown, PA 18106
(610) 391-9298
(800) 452-1117

Hub City Southeast

135 Cecil Court
Fayetteville, GA 30214
(770) 461-8334
(800) 777-7159

Hub City East

1011 Van Buren Avenue
Indian Trail, NC 28079
(704) 847-9131

Hub City Canada

80 Hale Road Unit #1
Brampton, Ontario L6W 3N9
(905) 455-6969
(888) 661-1889



2914 Industrial Avenue
Aberdeen, SD 57402 USA
PH: 605-225-0360
FAX: 605-225-0567

www.hubcityinc.com



Made in U.S.A.

A Regal Brand

REGAL

www.regalbeloit.com