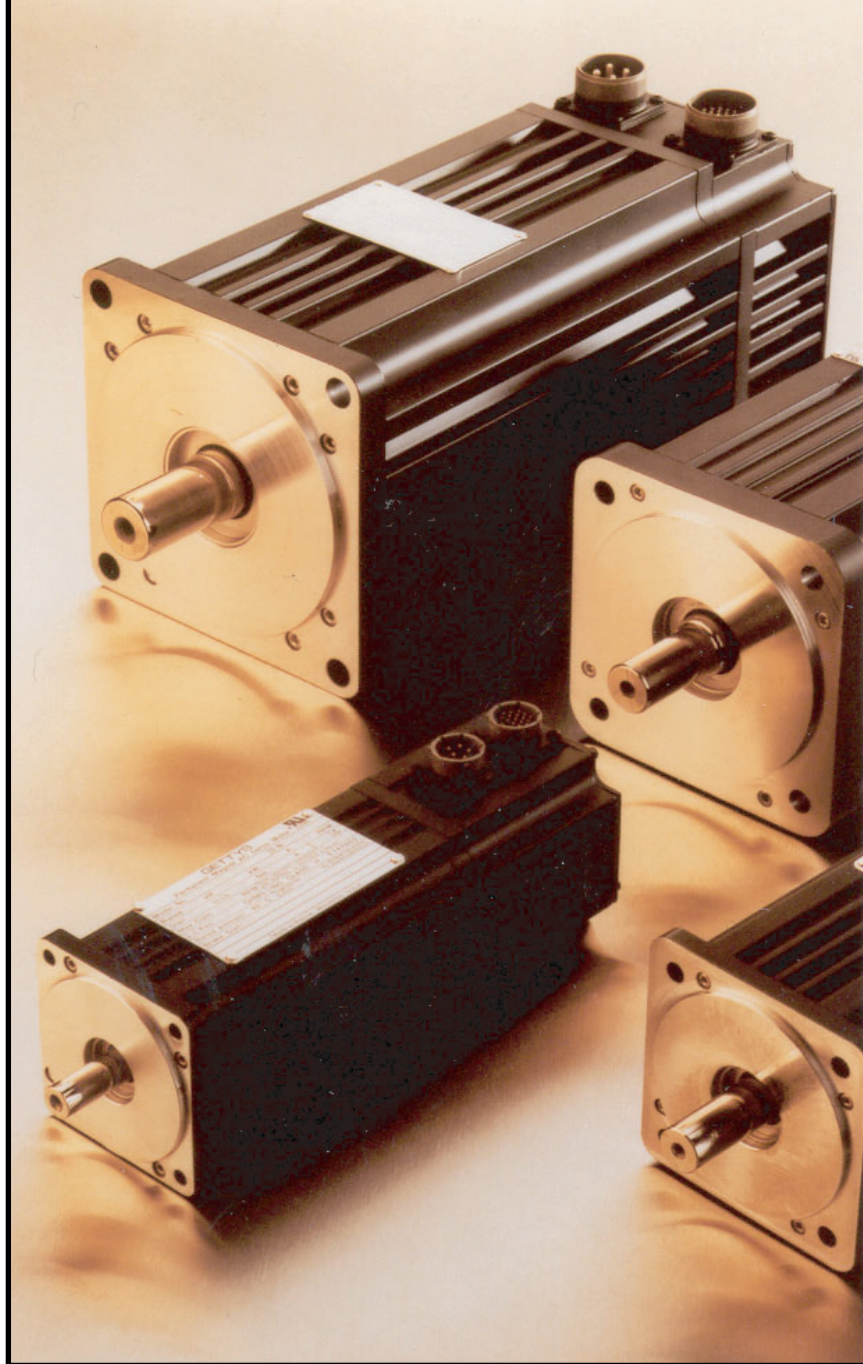


RUGGED INDUSTRIAL MOTORS

www.elwood.com



ELWOOD[®] HIGH PERFORMANCE
MOTORS
SERVOS - STEPPERS

ISO 9001
CERTIFIED COMPANY

DRIVE CENTRE 
Industrial Automation Systems Integrators

57 Galaxy Blvd., Units 1 & 2, Toronto, ON M9W 5P1
TEL: (416) 231-6767
www.drivecentre.ca

SERVO S

Standard Features:

- Proven, Rugged Design for Long Life in Demanding Industrial Environments
- 2", 3", 4", 6", 7" Frame Sizes
- Sealed for Repeated High-Pressure Wash Down
- 230v and 460v Windings
- Resolver or Incremental Encoder Feedback

SW SERIES

WASH DOWN SERVO

Extremely rugged design for demanding environments such as automotive and machine tool industries. Proven long life.



- 2, 3, 4, 6, & 7" Frame Sizes
- 0.6 Nm to 50 Nm Cont. Torque Range
- Sealing for High-Pressure Wash Down
- 115V / 230V / 460V Windings
- Resolver Encoder Feedback
- English, Metric or NEMA Mounting

www.elwood.com/sw

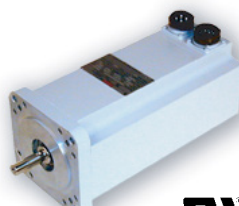
Optional Features:

- Absolute Feedback; High-Resolution, Multi-Turn
- Sealing for Temporary Immersion (1m depth)
- Spring-Set Electromechanical Brake
- English, NEMA, DIN, and **Custom** Mounting
- **Custom** Shafts, Keyways, Mounting Flanges
- Cable Assemblies, connectors to specification

SF SERIES

FOOD-GRADE SERVO

Designed specifically for the food and baking industries. Capable of withstanding repeated high pressure wash down. Smooth housing to minimize entrapment areas.



- 2, 3, 4 & 6" Frame Sizes
- Finless Housing, Stainless Shafts
- FDA-Approved Epoxy Coating
- 0.6 Nm to 50 Nm Cont. Torque Range
- Sealing for High Pressure Wash Down
- 115V / 230V / 460V Windings
- English, Metric or NEMA Mounting

www.elwood.com/sf

W SERIES

ALL-STAINLESS STEEL SERVO

All Stainless Steel servo motors for food, beverage, pharmaceutical, hygienic, and caustic washdown applications.



- 70, 100, 125mm Diameter Housings
- 0.5 Nm to 7.5 Nm Cont. Torque Range
- 300 Series Stainless Steel Exterior
- Sealing for Washdown Applications
- Teflon or Viton Shaft Seals
- Feedback Options for Most Controls
- Custom Mounting & Shafts Available

www.elwood.com/W-Series.html

SX SERIES

EXPLOSION-PROOF SERVO

Ideal for hazardous locations where dust, vapors, or gases form potentially flammable or explosive environments. Can be applied virtually worldwide.



- 3, 4, 6 & 7" Sizes UL/cUL Listed:
 - Class I Div 1 & 2, Groups C, D
 - Class II Div 1 & 2 Groups E, F, G
- 3, 4, & 6" Sizes: ATEX Ex d IIB T3
- 3" Sizes: ATEX/IECEx Ex tb IIIC T135°C
- 1.2 Nm to 36 Nm Cont. Torque Range
- Feedback Options for Most Controls
- English, Metric or NEMA Mounting

www.elwood.com/sx

H SERIES

LOW INERTIA SERVO

Authorized replacements for Rockwell Automation's H, S, W, and 1326AS Series servo motors. True drop-in, mechanically and electrically identical to originals.



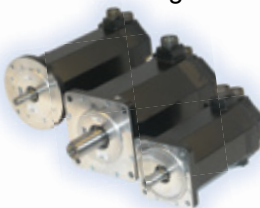
- Rockwell Automation Encompass Partner
- H-3000, H-4000, & H-6000 Sizes Available
- Identical Performance to Originals
- OEM Components, Available Indefinitely
- Rebuilds Available Regardless of Original Manufacturer
- Cable Sets for All Drive Platforms

www.elwood.com/H-Series.html

F SERIES

MEDIUM INERTIA SERVO

Authorized replacements for Rockwell Automation's F-Series servo motors. True drop-in, mechanically and electrically identical to originals. Medium inertia to match heavy loads.



- Rockwell Automation Encompass Partner
- F-4000 & F-6000 Sizes Available
- Identical Performance to Originals
- OEM Components, Available Indefinitely
- Rebuilds Available Regardless of Original Manufacturer
- Cable Sets for All Drive Platforms

www.elwood.com/F-Series.html

Standard Features:

- NEMA Standard Mounting Dimensions
- 1.8° Hybrid Design
- 18" Shielded Cable (Except RS-Series)
- Single or Double Shaft
- IP66 sealing (Except RS-Series)

Optional Features:

- Incremental Optical Encoders
- Extended Shielded Cables
- Connectors (MS or Header)
- Custom Shafts, Keyways, Mounting Flanges, etc.

WS SERIES

WASH-DOWN STEPPER

Economical step motor technology sealed to withstand repeated high pressure washdowns.



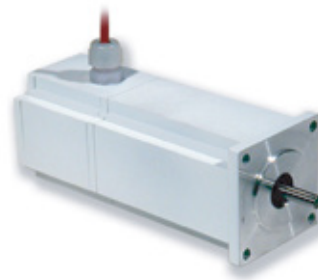
- NEMA 23 & 42 Frames
- Rugged design
- 45 OZ-IN (0.31 Nm) to 1600 OZ-IN (11.3 Nm) Torque Range (Unipolar)
- Rugged, Reliable Design
- Feedback Options Available

www.elwood.com/gettys_wd.shtml

FS SERIES

FOOD-GRADE STEPPER

Sealed to withstand repeated high pressure washdowns. Smooth housing and special fittings minimize potential entrapment areas for food processing and baking applications.



- NEMA 23 and 34 Frames
- Finless aluminum housing
- FDA-approved white coating
- Stainless steel hardware
- 45 OZ-IN (0.31 Nm) to 450 OZ-IN (3.17 Nm) Torque Range (Unipolar)
- Feedback Options Available
- All Stainless Steel Version Available (NEMA 23 Only)

www.elwood.com/gettys_fg.shtml

RS SERIES

STANDARD STEPPER

Proven, reliable design for demanding industrial environments. Custom options available for unique requirements.



- NEMA 23, 34 and 42 Frames
- 12" Flying Leads
- Rugged design
- 45 OZ-IN (0.31 Nm) to 1600 OZ-IN (11.3 Nm) torque range
- Feedback Options Available
- Connector Options Available
- Custom Housings, Mountings, Shafts Available

www.elwood.com/gettys_rs.shtml

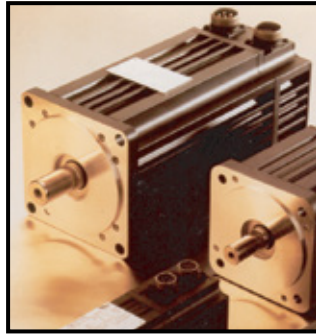


ELWOOD[®] HIGH PERFORMANCE
MOTORS
SERVOS - STEPPERS

ELWOOD HIGH PERFORMANCE MOTORS
2701 North Green Bay Road • Racine, Wisconsin 53404
Phone: (800) 558-9489 • Fax: (414) 764-4298
email: info@elwood.com web: www.elwood.com/motors

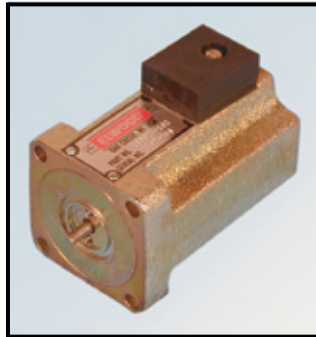
ELWOOD HIGH PERFORMANCE
SERVOS - STEPPERS

High performance stepper and servo motor products for harsh industrial environments, tailored to specific requirements.



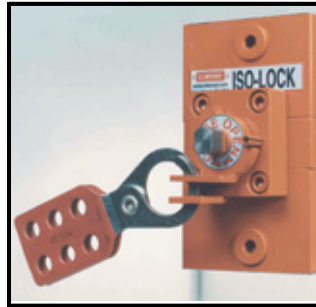
ELWOOD ELECTRONICS
Automation • Controls • Control Systems

Linear proportional solenoids for all industrial applications.



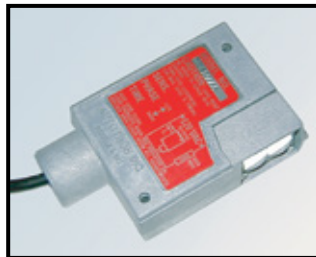
ELWOOD FLUID
POWER

Full line of directional and pressure control valves for water and low viscosity fluid applications, serving many diverse industries.



ELWOOD Autotron
PHOTOELECTRIC CONTROLS

Complete selection of industrial photo electric equipment from miniature to rugged die cast.



ELWOOD HIGH PERFORMANCE
MOTORS
SERVOS - STEPPERS

ELWOOD HIGH PERFORMANCE MOTORS
2701 North Green Bay Road
Racine, WI, 53404, USA
phone: 262-637-6591 fax: 414-764-4298
email: info@elwood.com
web: www.elwood.com/motors



www.elwood.com

10/13 2201
Rev. D
Printed in USA