

40 Series End Mount

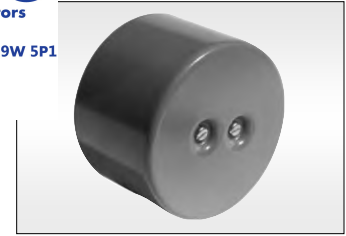
For Small AC and DC Motors
Torque Ratings: 3/8 and 3/4 lb-ft

Specifications:

Reaction Time: 15-20 milliseconds
(release and set)
Maximum RPM: 3600
CSA File #LR13814
Instructions & Parts Manual: BK4042

Design Features:

Selectable torque: Two rotating friction discs are used for 3/4 lb-ft torque and one friction disc is used for 3/8 lb-ft torque.
Retrofit to small AC and DC motors.
Plated internal parts - RoHS compliant.



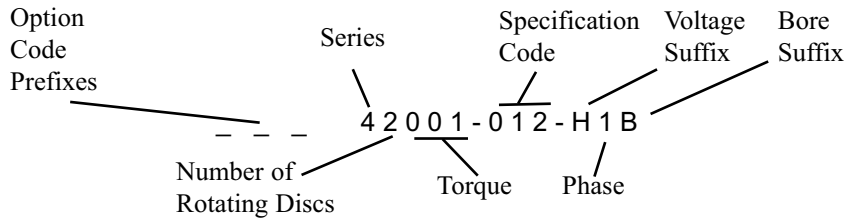
Designed for Dayton®, Bison, Bodine® and Klaufer (KMG) type motors and gearmotors.

Enclosure Type:

Dripproof Enclosure
NEMA 2, IP40
Steel cover and mounting bracket

Model #	Torque lb-ft (lb-in)	Wt. Lbs.	Inertia Wk ² lb-ft ²	Manual Release	List Price
42001-012	3/8 or 3/4 (4.5 or 9)	3	0.001	No	\$180
42001-013	3/8 or 3/4 (4.5 or 9)	3	0.001	Yes	\$228

Brake Model Number Definition



Standard Voltages (single phase only):		
Suffix	Voltage	
H	115V, 60Hz	
M	220/230V, 60 Hz	
Optional DC voltages are available:		
Suffix	Voltage	Adder
A	12 Vdc	\$70
B	24 Vdc	\$70

Standard Hub Bore Sizes:		
Suffix	Size	Keyway
A	8mm	None
B	3/8"	None
C	1/2"	None
D	5/8"	None
Maximum bore diameter is 5/8".		

Available Options:	Prefix
Direct Current (DC Voltage)	D
Class H Insulation	Q
Refer to pages 51-56 for option descriptions and pricing.	

